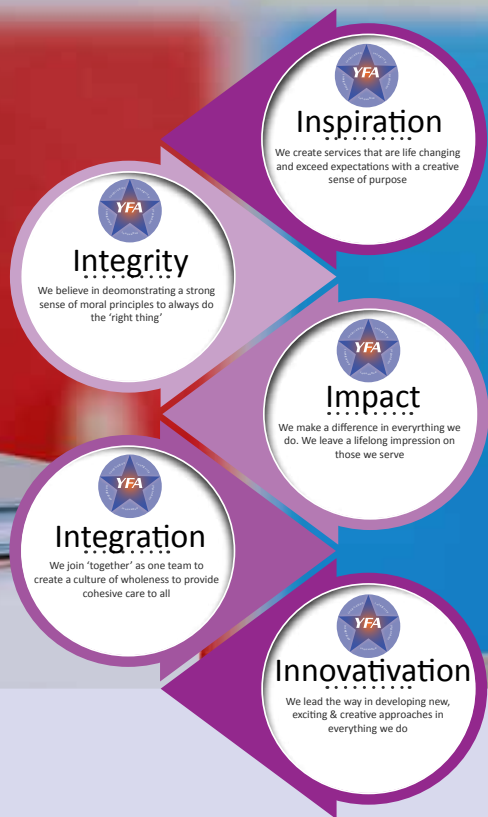


Living our Values Every Day, For Every Child



2020 – 2021 Annual Report





Living our Values Every Day, For Every Child



YFA has celebrated over 50 years of providing quality family and children services. Reaching 50 has made us better, more integrated, innovative, inspiring our communities to become better places to live through healthy families. The impact we have had is only made possible by our highly engaged staff who provide the strong sense of moral principles to always do the “right thing.”

My message is to share with you the importance of our 350 employees who come to work every day living our values, making our communities better one child, one family at a time. Our staff are the most dedicated people and the best team I have ever worked with. They are problem solvers, creative, intelligent individuals with hearts of gold. They are always asking “how can I do my job better and what do I need to do to help this child or family?” They inspire all of us by working long hours and by the integrity they convey. They always approach the work they do in a manner of sensitivity and compassion. They are true heroes. In the face of this pandemic our employees adapted, changed, and came up with ways to keep our children safe. No one ever complained. They just did what they needed to do to get the job done. They are YFA strong!

YFA is also working on growth and expansion in the areas of prevention, behavioral health, housing, and commercial real estate **to build organizational assets that will serve our children and families and reduce the expense to our funders, ultimately allowing more dollars to go directly to serving clients and strengthening our workforce.** We recently opened our Candace Behavioral Health Center named after Candace Glewen, our former chair who passed away. We continue to look at expansion of our assisted school-based programs. Our housing and commercial real estate is an area that we are excited about. We plan to build phase two of the Commons at Speer Village providing 50 affordable housing units. We have purchased and are renovating a building in Inverness that will house our Citrus Case Management Program. We purchased a piece of land in Brooksville to build an office for our Hernando Case Management Team. Finally, we purchased property on Plathe Road to build a 30,000 square foot office that will house our Pasco Case Management Program, the Child Protective Unit and the Community Diversion Program.

YFA has been focused on three strategic initiatives of:

- High Performance to be the highest performing organization in all we do
- Growth and Expansion in the areas that complement our mission
- Work Force Stability to be the employer of choice in our industry

YFA adopted the 4 Disciplines of Execution two years ago. This is focusing our organization on our “Wildly Important Goals” (WIGs). We stay focused on our three initiatives and pay close attention to what are the lead indicators that will keep us on track and move us forward.

Our next 50 years look bright, and we are all motivated to continue our great work of making our communities healthier places to live. We thank you, the Board of Directors, our partners and our employees for all they do to make YFA a great place to work.

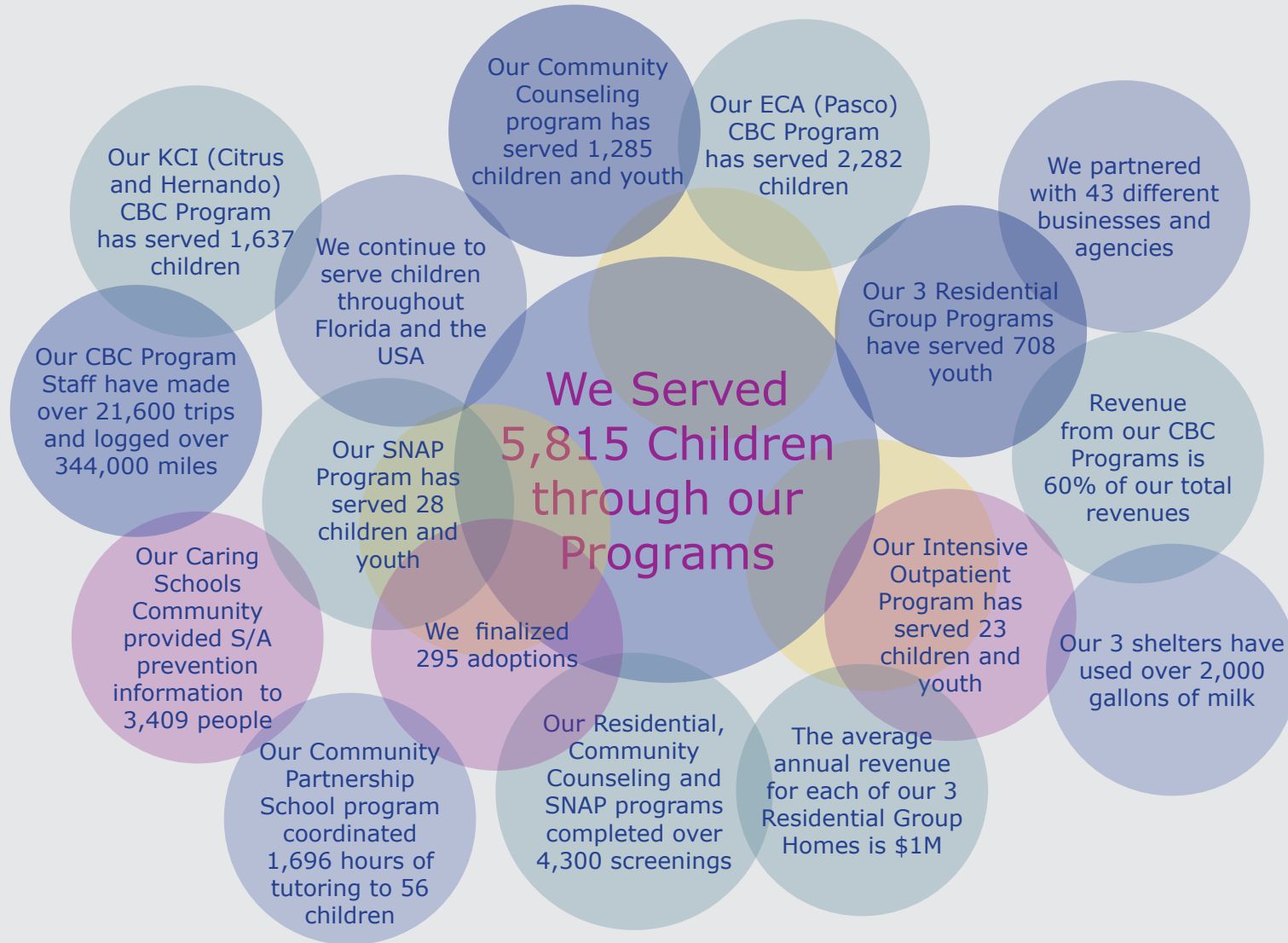
Mark Wickham, President & CEO

Help for today
Hope for tomorrow



YFA Program Facts

(Data: 7/1/20 - 6/30/21 | Served numbers are unduplicated)



Child Welfare Case Management & Adoptions



Case Managers work with families and caregivers to coordinate services that are available and appropriate to the child's situation. Case Management services are provided to keep families intact by educating and strengthening parents and caregivers, reunify children who have been removed from their family, maintain a stable, safe placement for children who are in out-of-home care, and, locate an appropriate, loving and nurturing 'forever family' for each local foster child who is available to be adopted.

Through our partnership with Eckerd Connects and Kids Central, we served the highest number of children among all YFA programs: 2,282 for our ECA and 1,637 for our KCI programs.

The work of the adoption units of both programs resulted in 295 adoptions exceeding their adoption goals for the year, giving children a new forever family.



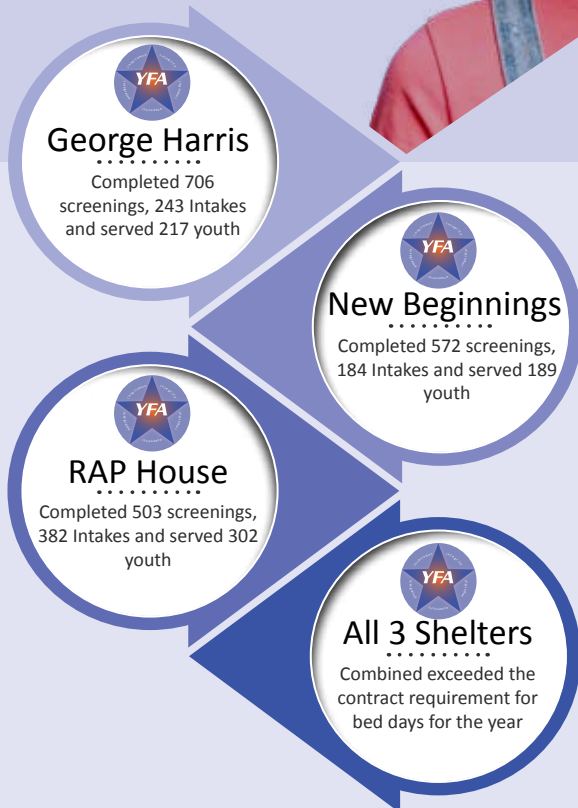
Residential Group Care



YFA operates three Residential Group Care (RGC) shelters and serves youth not only from Central Florida but across our country and beyond.

In our RGC programs we serve youth between the ages of 10 and 17 who may have run away, are homeless, have been kicked out/locked out by their parent(s) or guardian(s), may need short-term respite or crisis placement due to family conflict, require emergency shelter placement due to abuse and/or neglect, children up for adoption, or due to foster home disruption.

Our three shelters served 708 youth during the year. In addition, the programs completed 1,781 screenings and 809 intakes.



We continue to serve children throughout Florida and the USA

The average annual revenue for each of our 3 Residential Group Homes is \$1M

Our 3 shelters have used over 2,000 gallons of milk



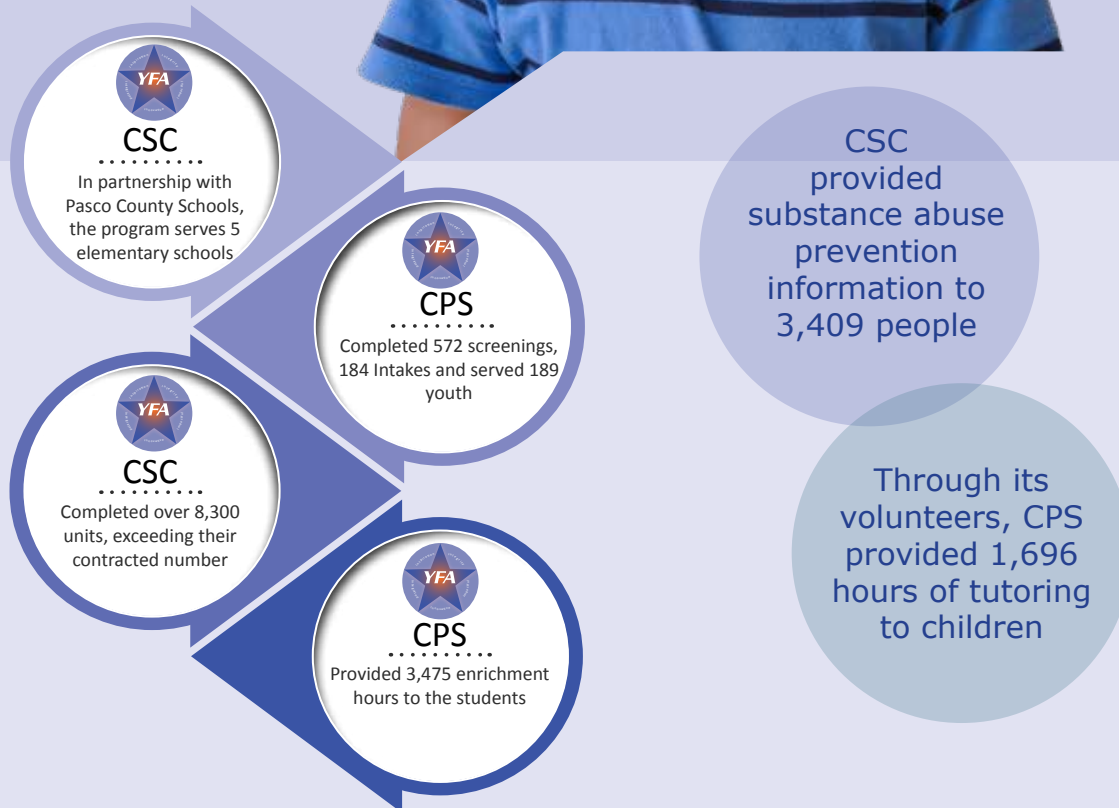
Help for today
Hope for tomorrow

School Based Prevention Services

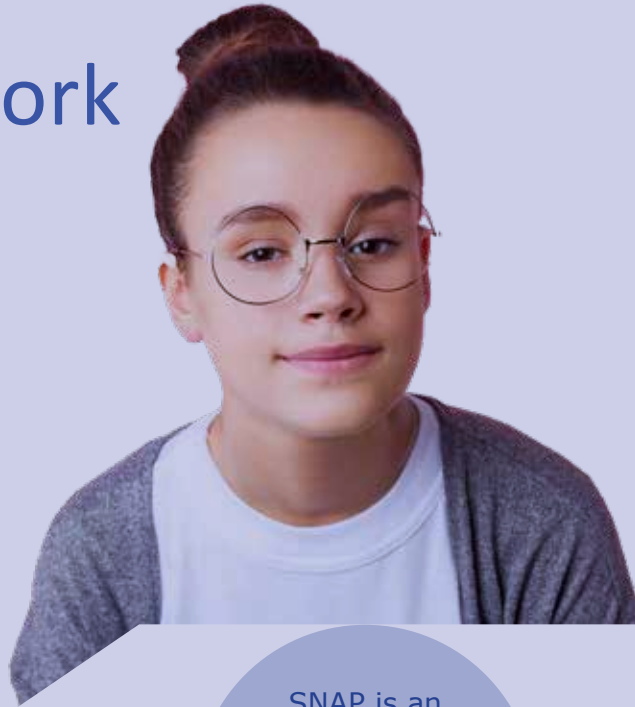


Our Caring Schools Community (CSC) program is part of Florida's comprehensive system to reduce the impact of substance abuse and co-occurring disorders on youth and their families. It is funded by DCF through CFBHN, with the purpose to provide early intervention services to Pasco County children who are at risk of substance abuse.

The Community Partnership School (CPS) Program is part of YFA's Program of Prevention for students. The Program operates as a full-service student focused community hub which encompasses a medical clinic, pantry and thrift store. The integrated support provided by the CPS Program removes barriers to health care, food and mental health services for students and their families while helping to increase student attendance, test scores and lowering suspension rates.

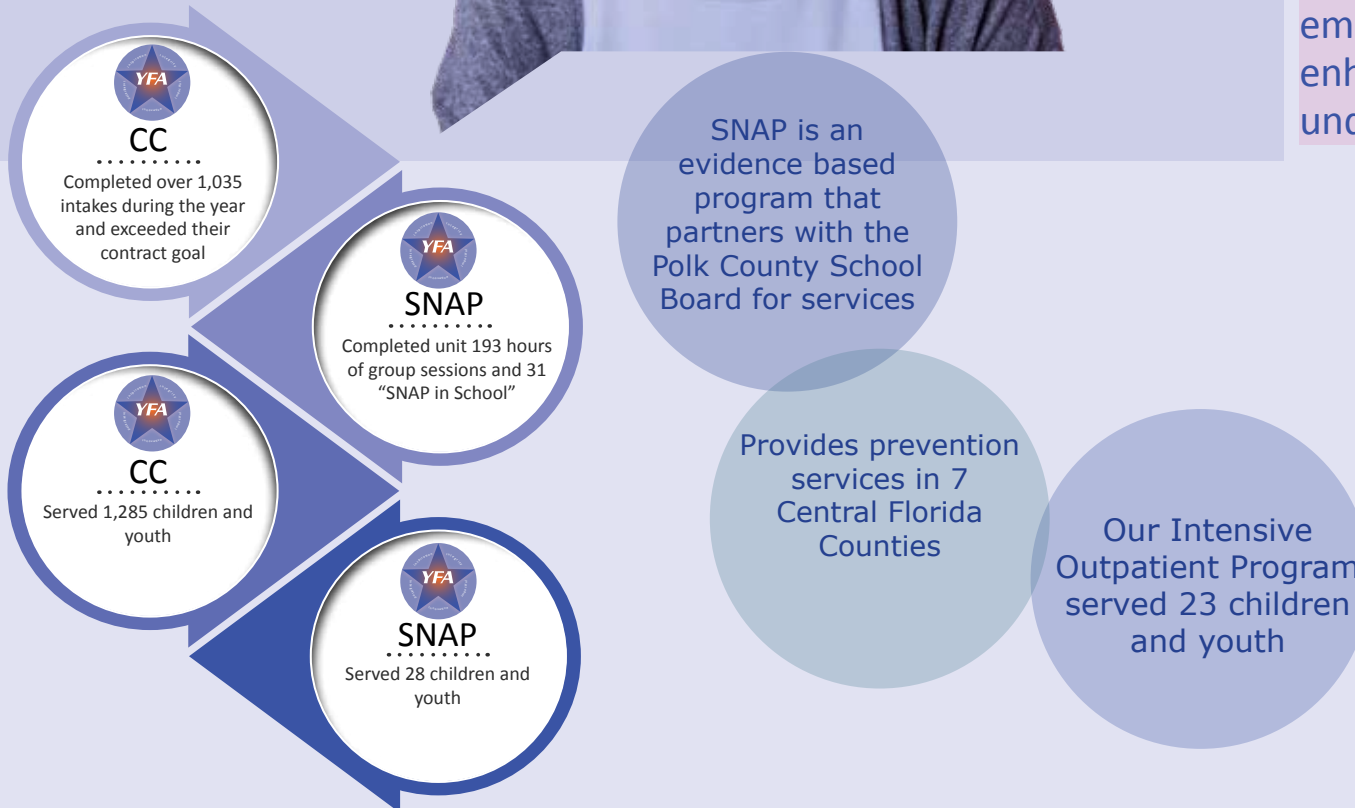


Florida Network Prevention Services



Community Counseling (CC) is a prevention program designed to assist families who have a child that is a runaway, truant, and/or ungovernable or at-risk of these behaviors. Services are aimed at preventing youth from entering the child welfare and/or the juvenile justice system by providing an array of services to strengthen the family. This program includes Intensive Case Management (ICM).

“Stop Now and Plan” (SNAP) enhances social skills and problem solving skills by teaching children how to regulate their emotions and for the parent how to enhance their skill in helping their children understand and regulate their emotions.



We continue to meet the needs of our community...



The Commons at Speer Village completed their second year of providing a home to 8 adults. With the additional assistance of their Supportive Living Coach, each resident, though disabled, is able to live more independently and be a part of the local community.

During the year, Candace Behavioral Health, our new Medicaid program completed and acquired to be licensed and the program hired its first therapist and opened July 1, 2021.

Identifying the need for our Child Welfare programs, we began the process of acquiring office space and property for our KCI and Pasco programs ultimately saving dollars that go back into the programs.

For our KCI CBC program, we identified existing office space and land for new program offices in both Herando and Citrus Counties

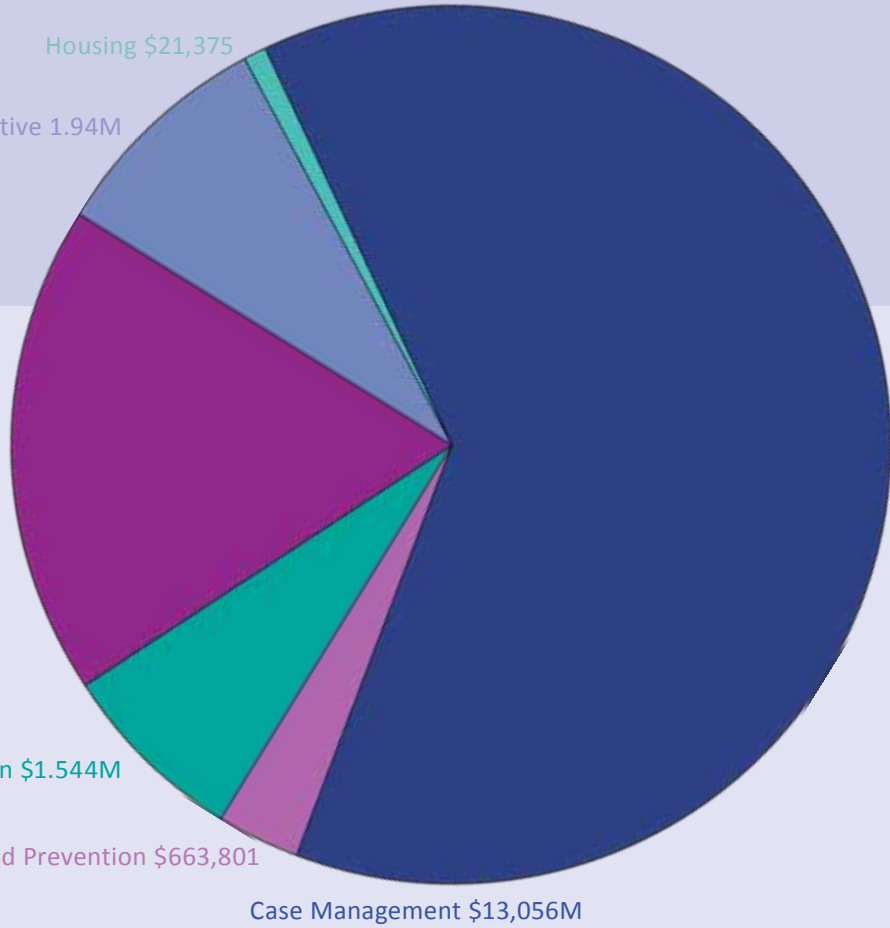
For our ECA CBC program, we identified property and are engaging the community to develop a centralized service center for Pasco County Child Welfare Services



Finances



Revenue



Out of every dollar, 91¢ goes directly to the programs

*YFA is committed to working in **partnership** with **communities** and our **families** to create a safe, nurturing environment for **children***

Partners

- Central Florida Behavioral Health Network
- Citrus County Board of County Commissioners
- Community Partnership School
- Department of Health
- District School Board of Pasco County
- Eckerd Connects
- Florida Blue
- Florida Department of Children and Families
- Florida Department of Health, Food and Nutrition
- Florida Department of Juvenile Justice
- Florida Network of Youth and Family Services, Inc.
- Heartland for Kids, Inc.
- Kids Central, Inc.
- Pasco County Board County of Commissioners
- Pasco Housing Authority
- Publix Supermarket Charities, Inc.
- Rays Baseball Foundation
- TD Bank Charitable Foundation
- The Speer Foundation
- US Department of Health and Human Services
- United Way of Central Florida
- United Way of Hernando County
- United Way of Pasco County
- University of Central Florida

Memberships

- Florida Coalition for Children
- Florida Network of Youth and Family Services
- National Network for Youth
- National Safe Place



Board of Directors

- David DeWeerd, Chair
- James Mallo, Vice Chair
- Nicholas Ottaviano, Treasurer
- Michelle Crawford, Secretary
- Board Members
- Geoffrey Balkcom
- Sandy Barley
- Peter Barrett
- Richard Bekesh
- Alison Crumbley
- Patrick Helm
- Brian Moyer
- Honorable Debra Roberts
- Alfred W. Torrence, Esq.
- Tom Trask, Esq.
- Ryan Ward
- Melanie Waxler

Youth and Family Alternatives, Inc.

7524 Plathe Road
 New Port Richey, FL 34653
 727-835-4166 | info@yfainc.org
 www.yfainc.org



Help for today
Hope for tomorrow